



LIFT IRRIGATION SCHEME – 1 Ha. CHAK - ODISHA

PHANS4 CONSULTING
PVT. LTD.

TENDER SYNOPSIS

Sl. No.	Name of Work	Class/EMD /Tender Fee /Period of completion
1	Execution of 6 nos. of Lift Irrigation Schemes with intake points on Tel, Mahanadi, Indravati reservoir, Indravati, Ong, Suktel river having Command area between 500Ha. to 2000 Ha. in Cluster No. XVIII in the districts of Kalahandi, Bolangir and Bargarh including its distribution network, up to 1 Ha Chak having total planned Culturable Command Area of 9,547 Ha. on "EPC –Turn Key" basis including power system connectivity and Operation & Maintenance of complete commissioned schemes for five years.	(1) Class - Short Listed Bidders Super Class (2) EMD –Rs. 277.00 Lakh through Online/Offline mode. (3) Tender Fee –Rs.50,000/- (Non Refundable)by Online/offline mode (4) Period of Completion: 30 (Thirty) calendar months including rainy season.

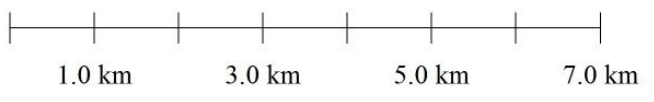
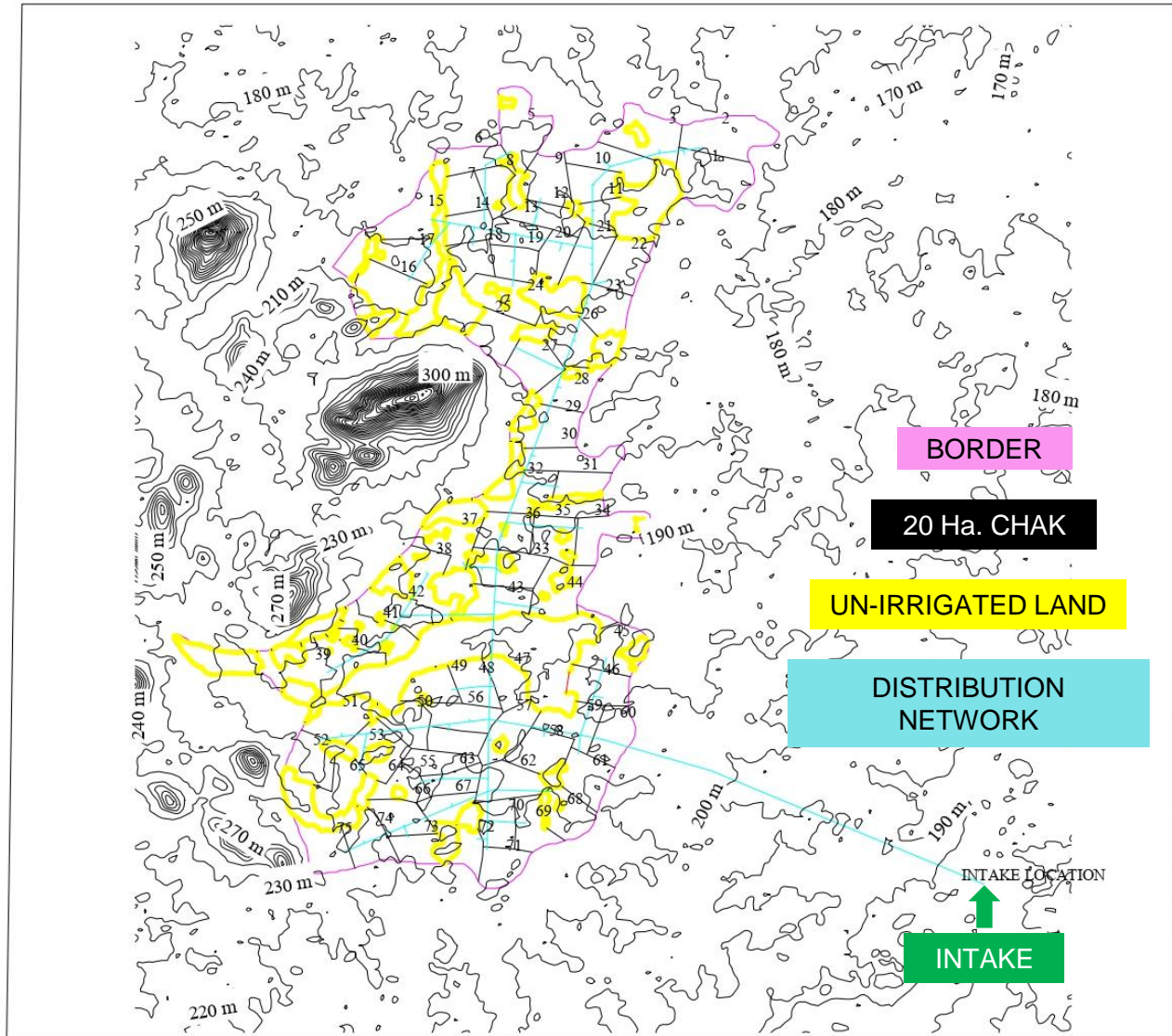
- A. Period of Completion : 30 (Thirty) Calendar Months.
- B. Date & Time of Availability of Bid Document in the Portal : 15/07/2019 , 11 AM
- C. Period of Sale of Bidding Document : 45 (Forty five) Days
- D. Time and Date For Pre-Bid Conference : 11.00 AM on 03/08/2019
- E. Last Date and Time for Receipt of Bids : 28/08/2019 up to 5.00 PM
- F. Place of Sale, Receipt of Bids : On-Line Through e-Procurement.
- G. Time and Date of Opening of Technical Bid : 11.00 AM on 31/08/2019
- H. Place of Opening Of Bids : O/o the PD-cum-CE,PMU, MegaliftProjects Plot no. A 8/2, Bhoinagar, Bhubaneswar, Odisha, PIN-751022

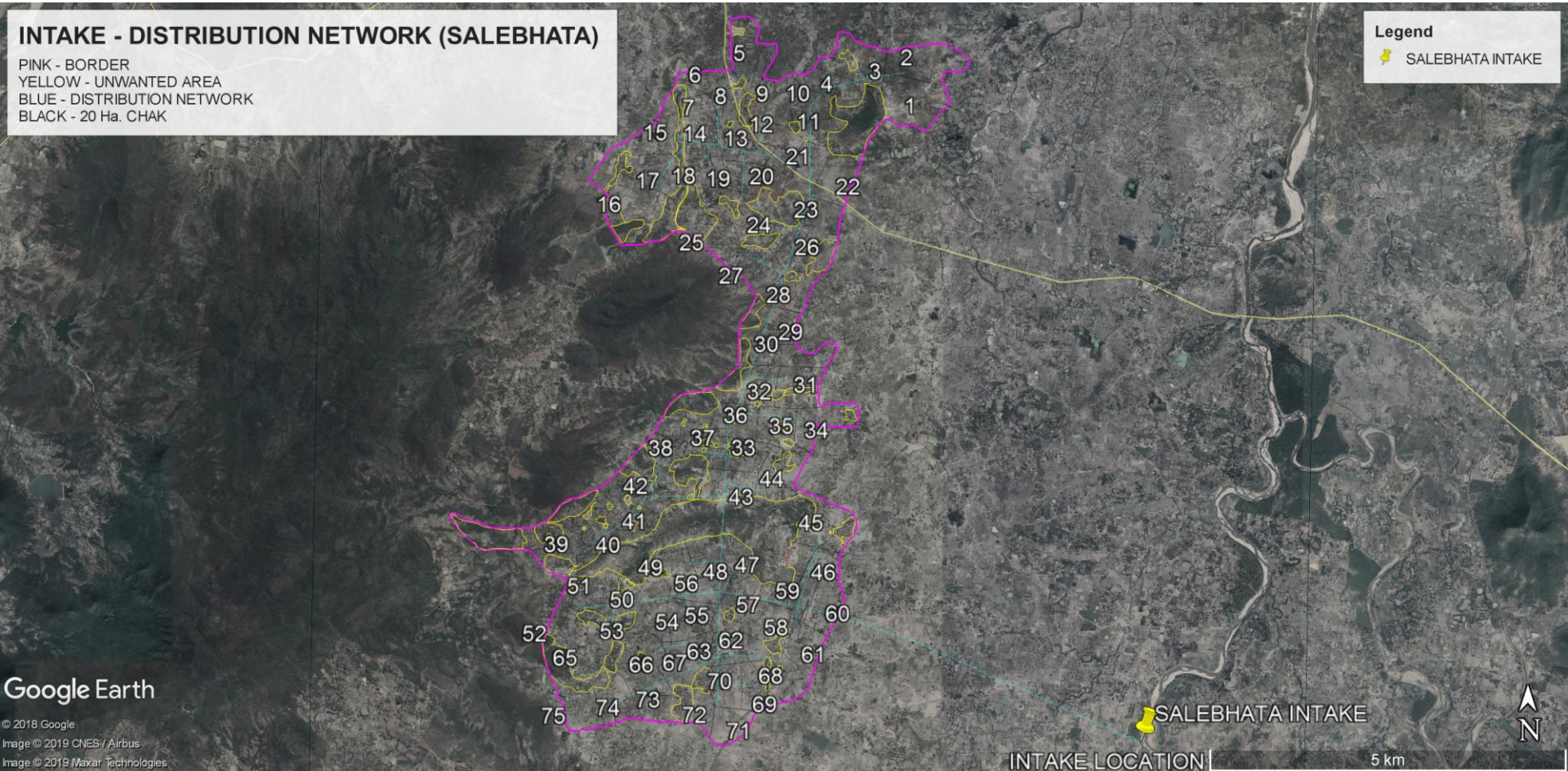
SCOPE OF WORK

Execution of 6 nos. of Lift Irrigation Schemes with intake points on Tel, Mahanadi, Indravati reservoir, Indravati, Ong, Suktel river having Command area between 500Ha. to 2000 Ha. In Cluster No. **XVIII** in the districts of Kalahandi, Bolangir and Bargarh including its distribution network, up to 1 Ha Chak having total planned Culturable Command Area of 9,547 Ha. on “EPC –Turn Key” basis including power system connectivity and Operation & Maintenance of complete commissioned schemes for five years. The Mega Lift schemes are primarily aimed for supplementation for Kharrif water demand in the upland command areas of respective schemes.

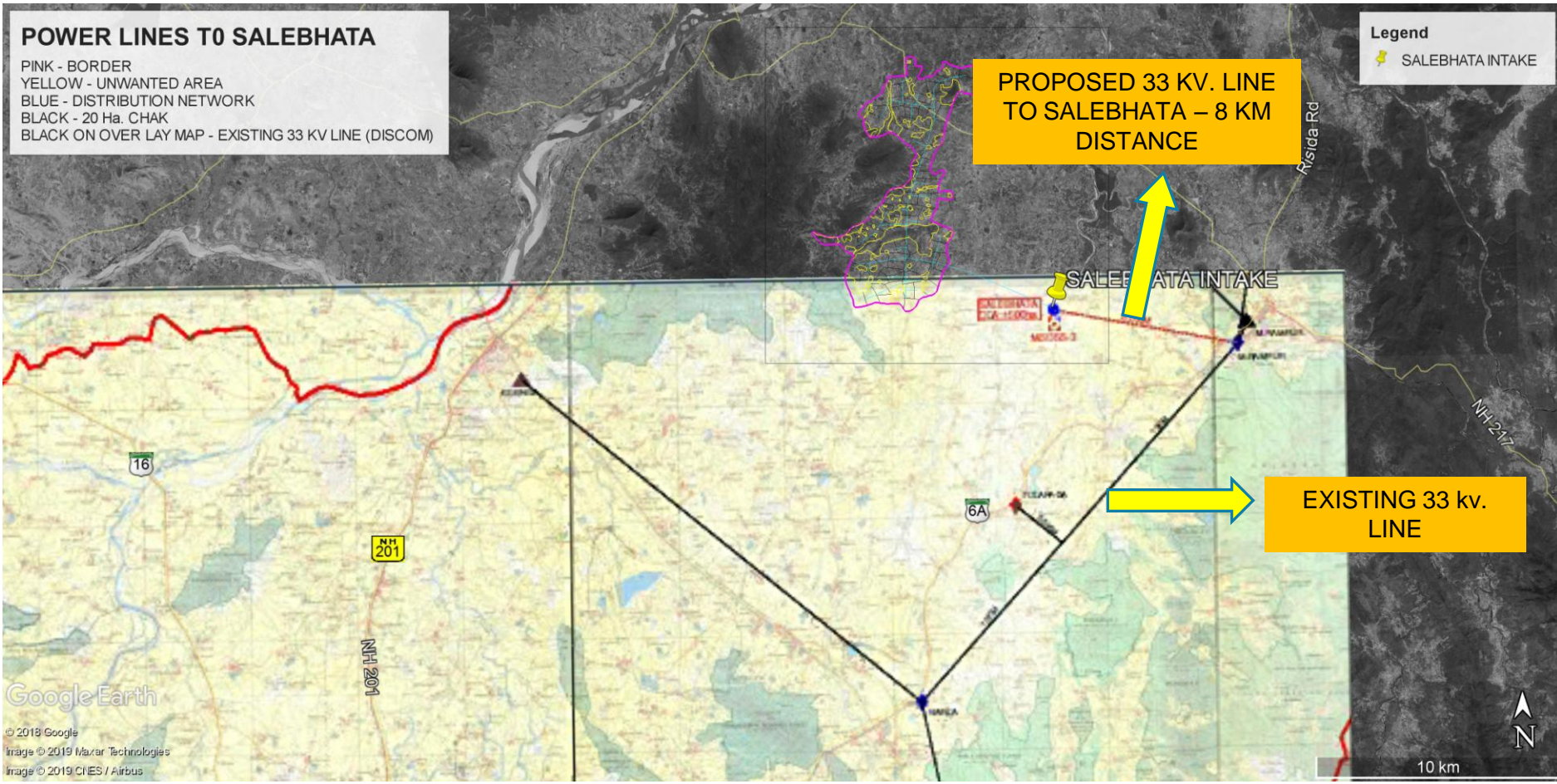
SCHEME 1 - SALEBHATA

LIS CONTOUR SURVEY CONSULTING OF SALEBHATA



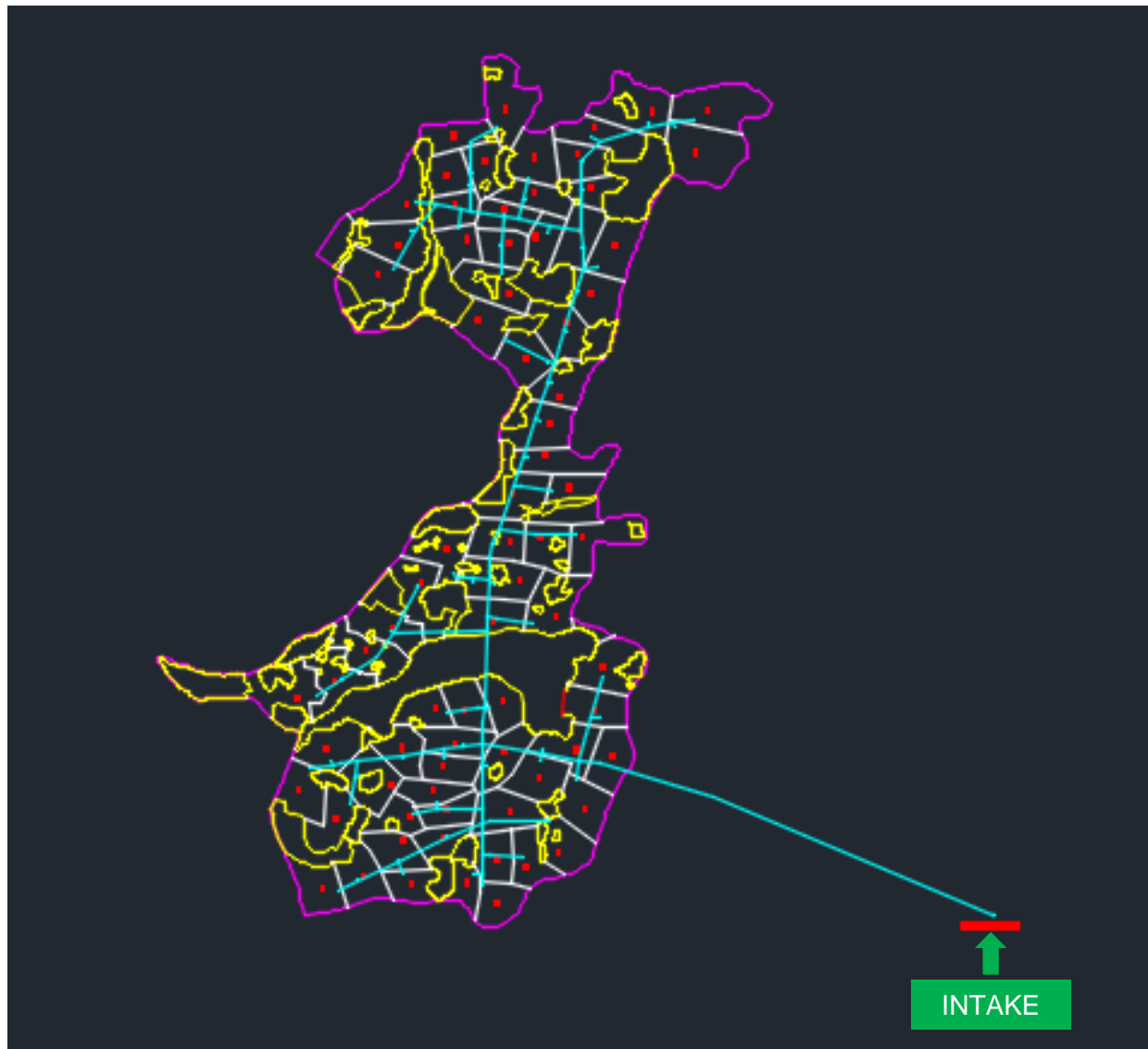


GIS MAPPING GEO REFERENCING INTAKE – DISTRIBUTION NETWORK



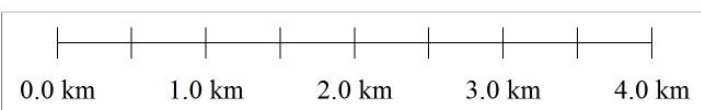
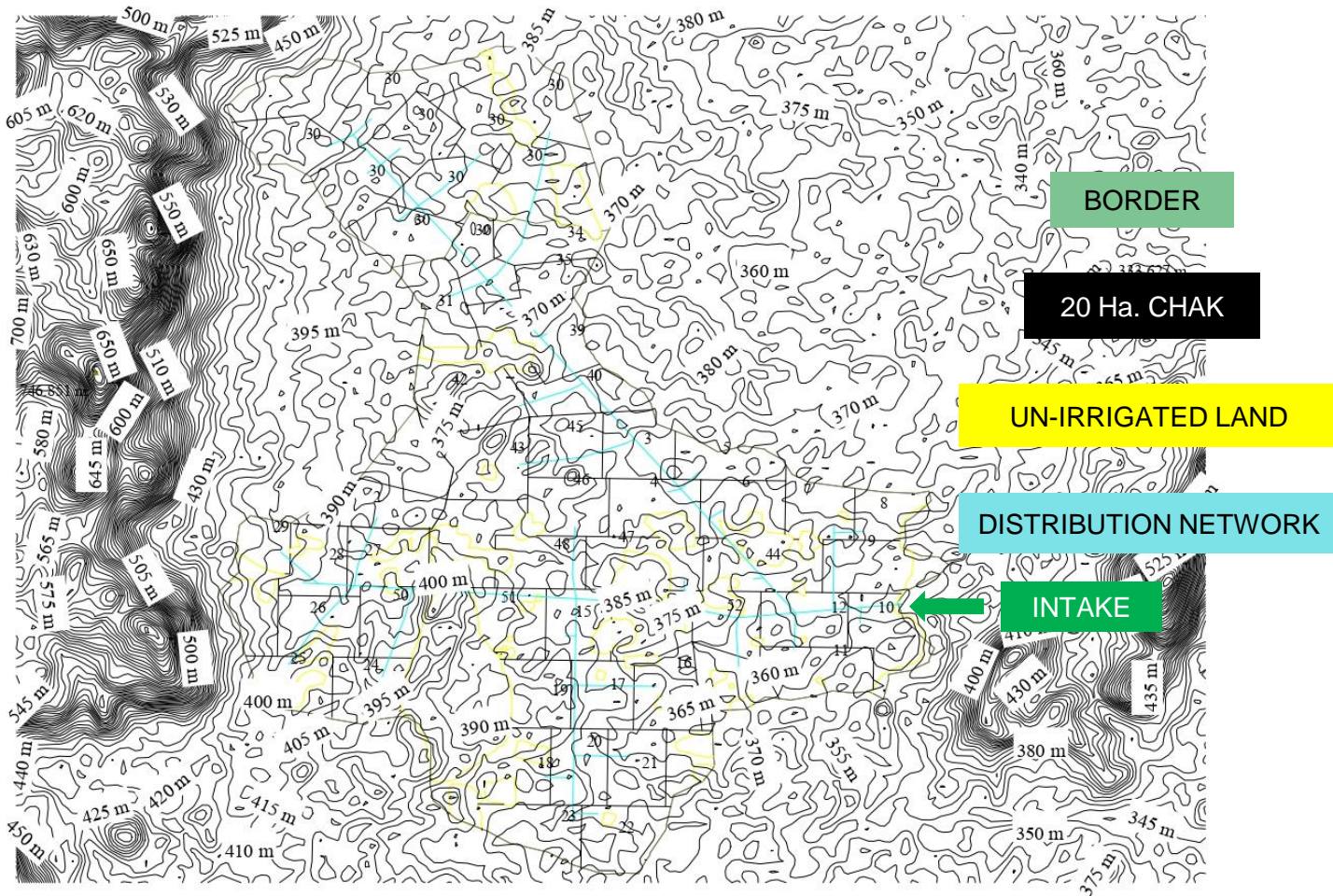
GIS MAPPING OF EXISTING AND PROPOSED POWER LINES INDEX MAP

SURVEYED GIS AUTO CAD – 20 Ha. CHAK – SALEBHATA



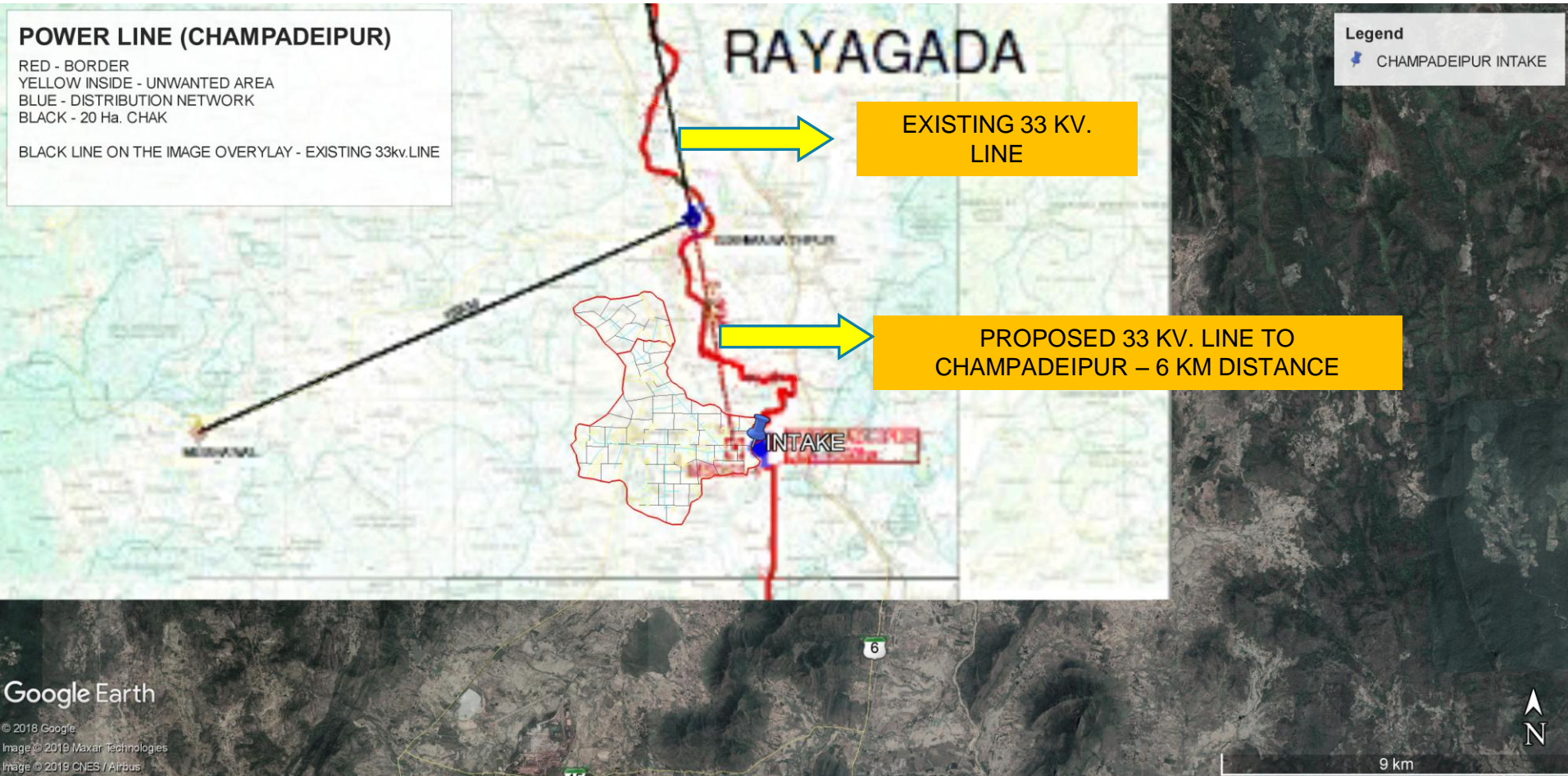
SCHEME 2 - CHAMPADEIPUR

LIS CONTOUR SURVEY ENGINEERING OF CHAMPADEIPUR



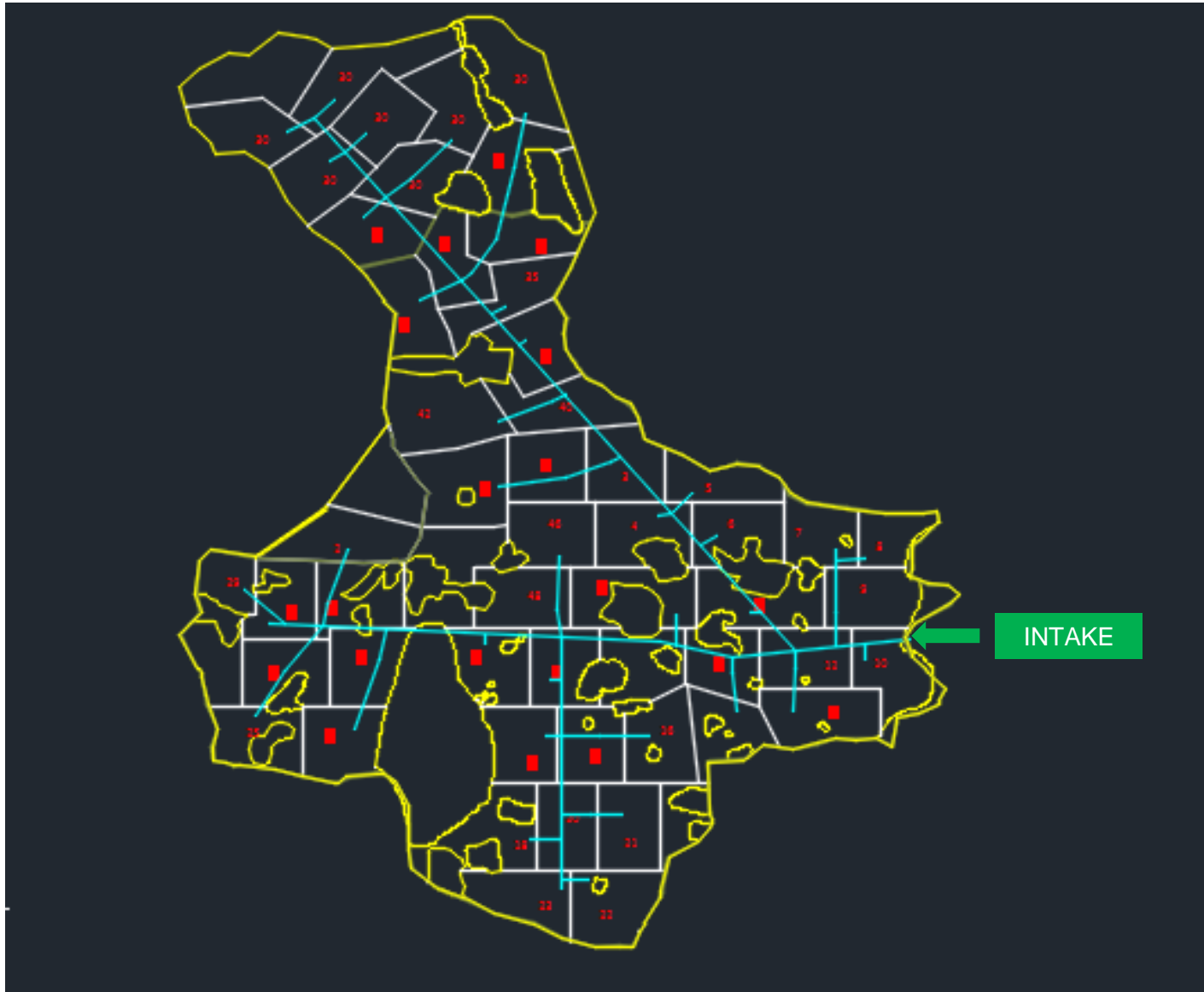


GIS MAPPING COORDINATES INTAKE – DISTRIBUTION NETWORK



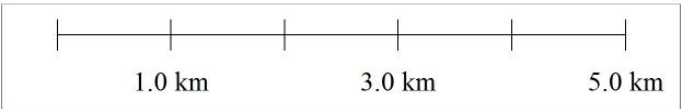
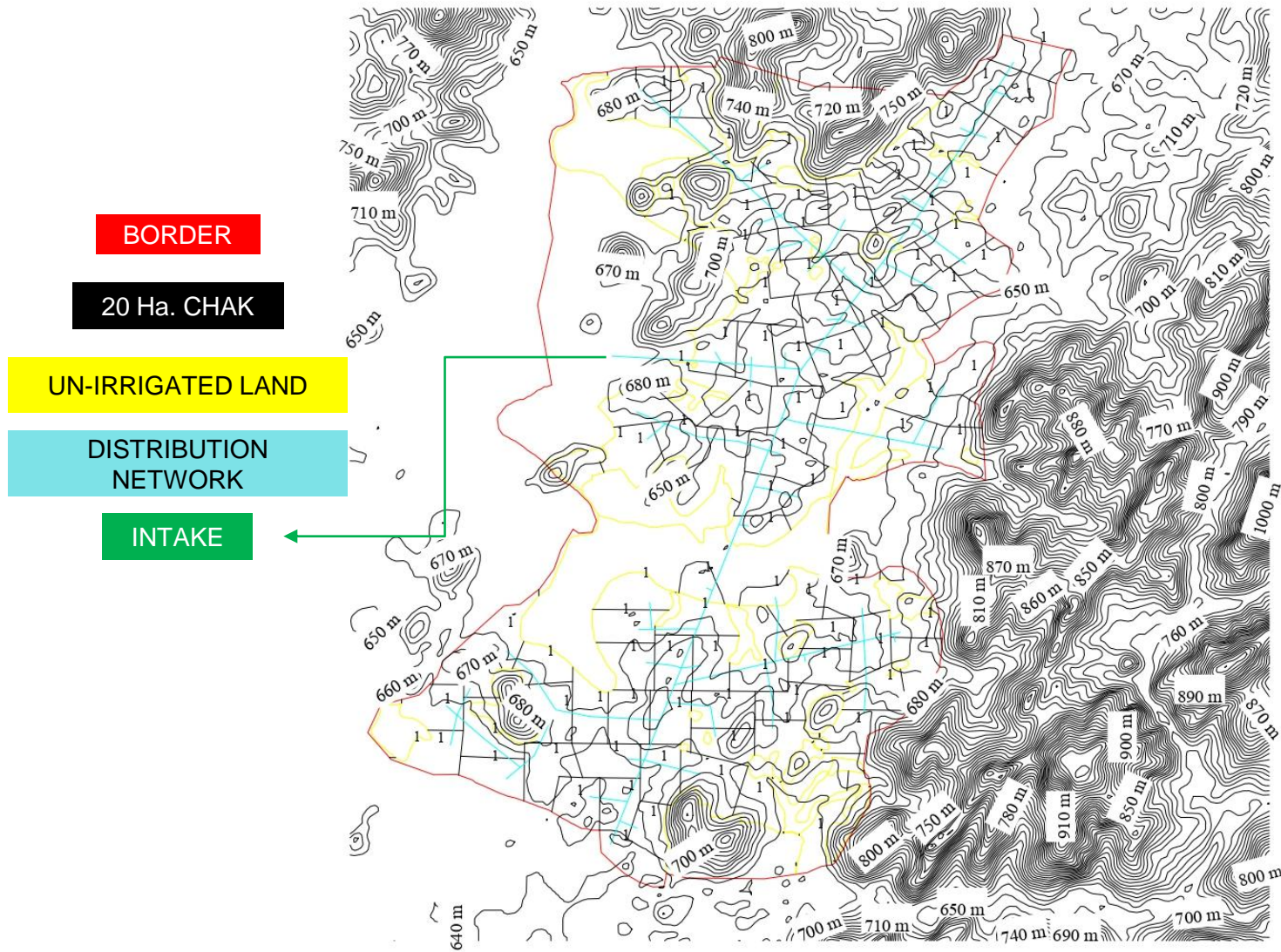
GIS MAPPING OF EXISTING AND PROPOSED POWER LINES INDEX MAP

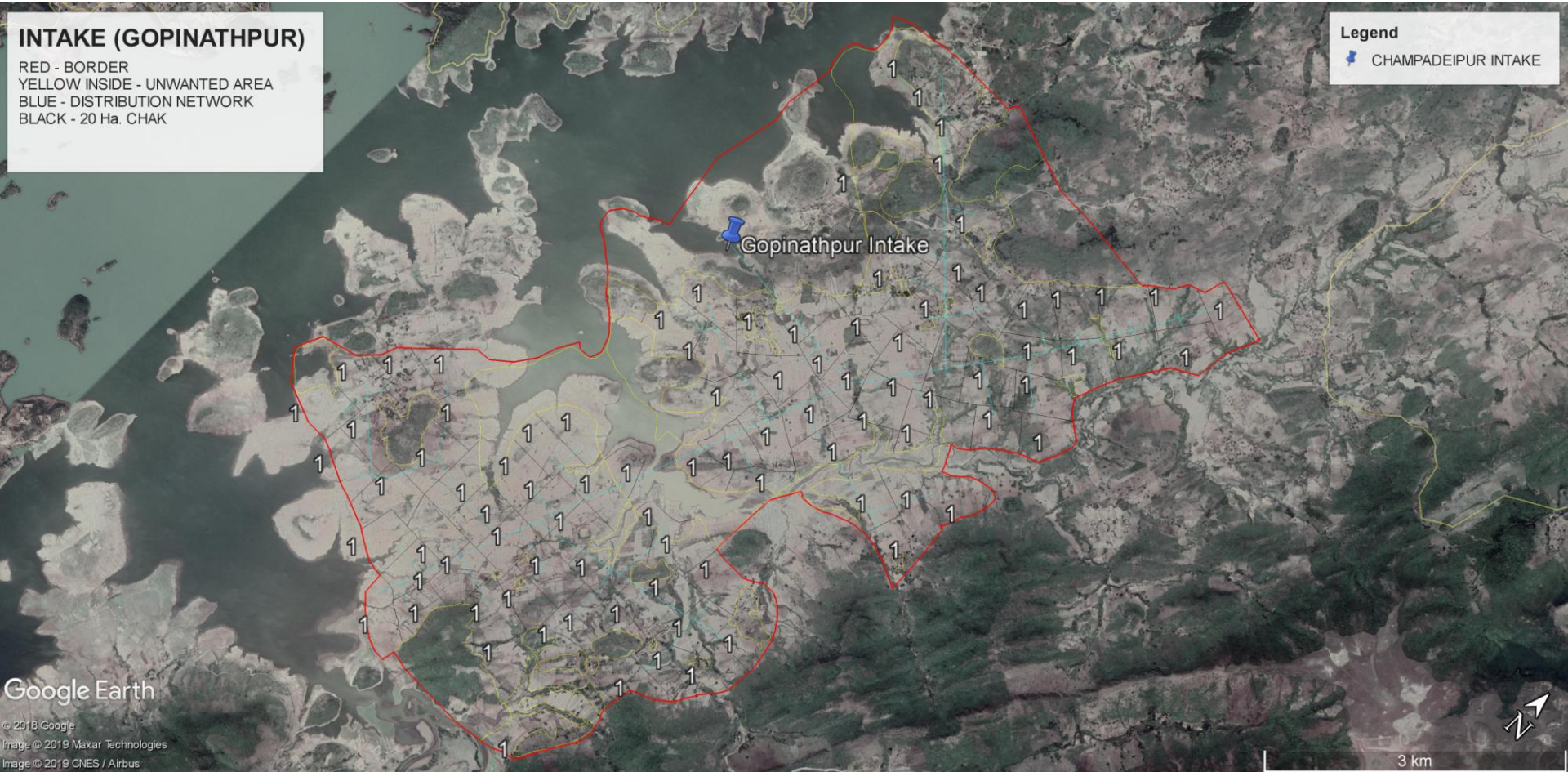
GEO REFERENCED AUTO CAD – 20 Ha. CHAK - CHAMPADEIPUR



SCHEME 3 - GOPINATHPUR

10 M INTERVAL CONTOUR SURVEYING OF GOPINATHPUR





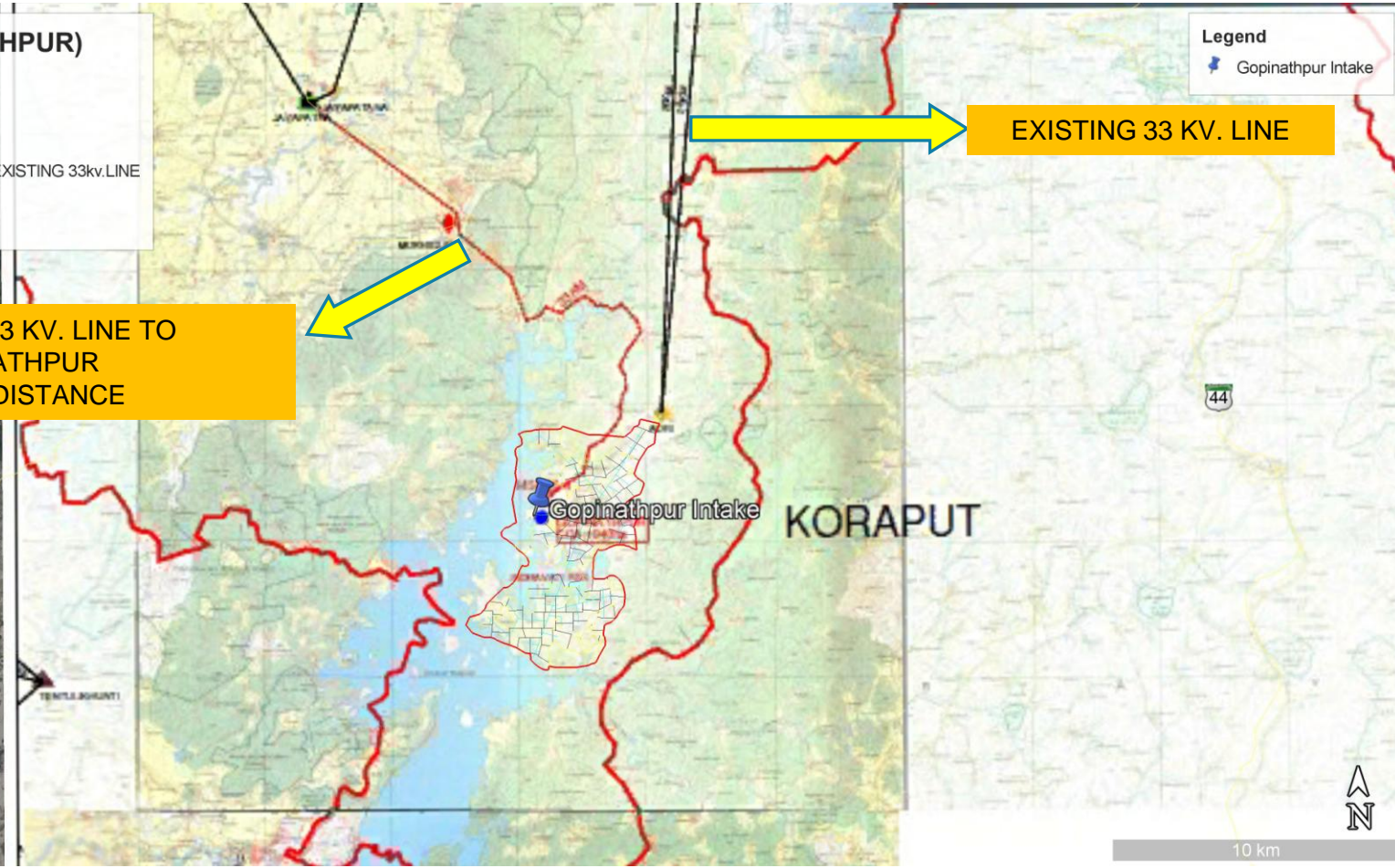
COORDINATED INTAKE – DISTRIBUTION NETWORK GIS SURVEYING

POWER LINES (GOPINATHPUR)
RED - BORDER
YELLOW INSIDE - UNWANTED AREA
BLUE - DISTRIBUTION NETWORK
BLACK - 20 Ha. CHAK
BLACK LINE ON THE IMAGE OVERLAY - EXISTING 33kv.LINE

Legend
Gopinathpur Intake

EXISTING 33 KV. LINE

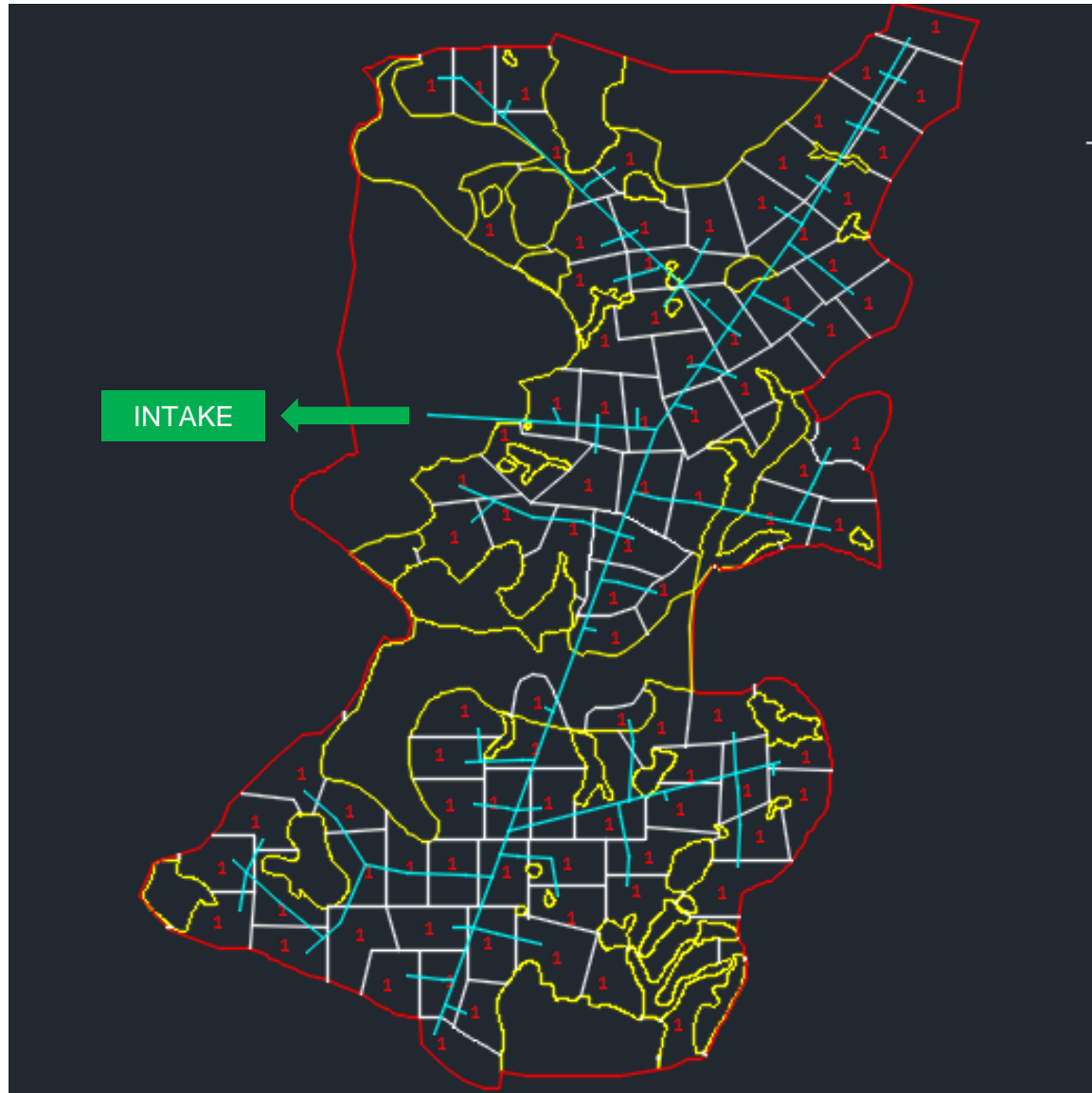
PROPOSED 33 KV. LINE TO GOPINATHPUR
- 23 KM DISTANCE



Google Earth
© 2018 Google
Image © 2019 Maxar Technologies
Image © 2019 CNES / Airbus

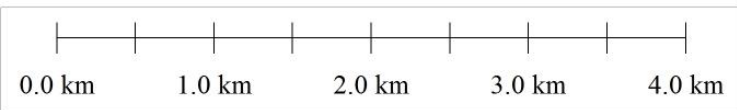
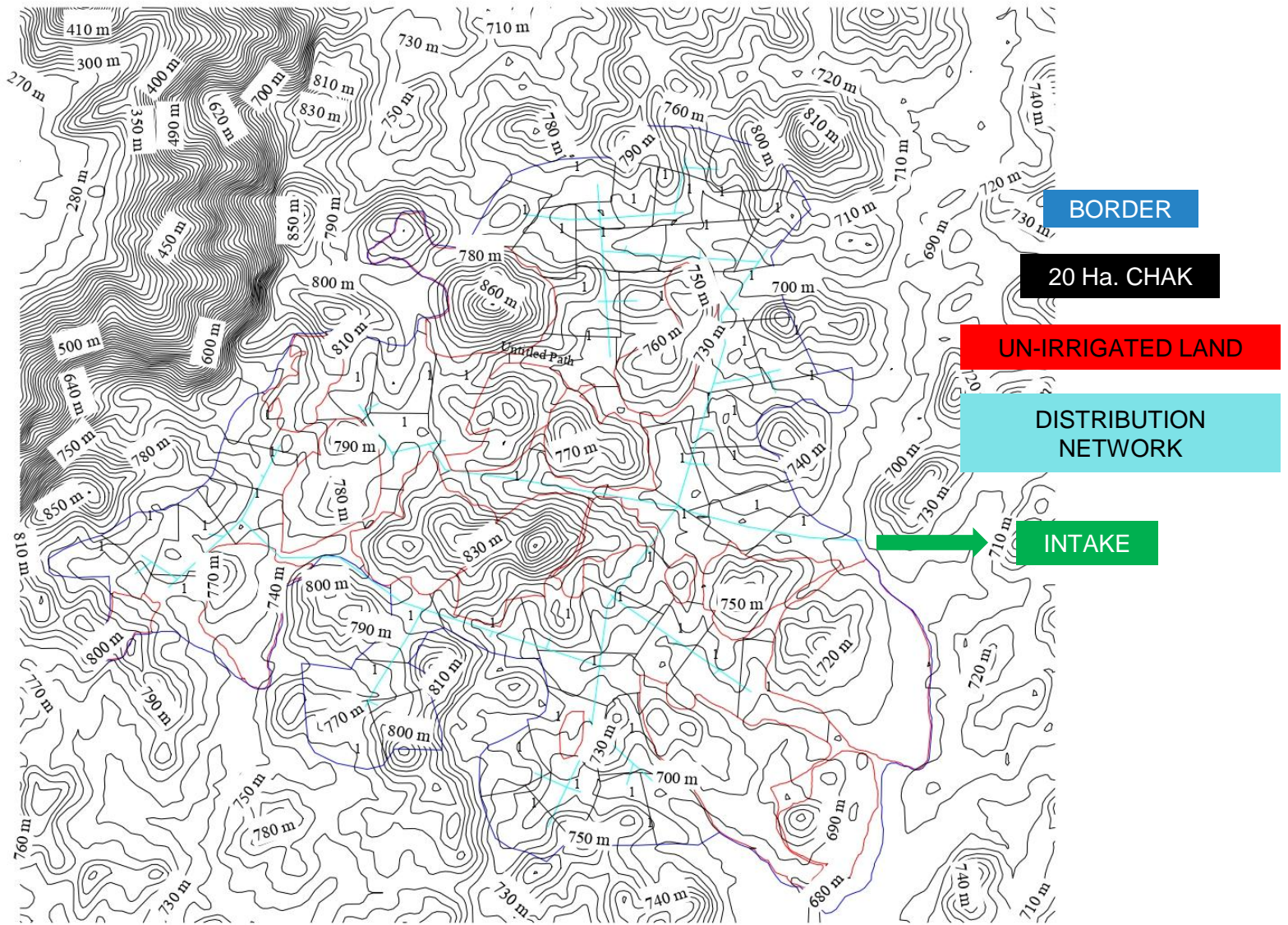
GIS MAPPING OF EXISTING AND PROPOSED POWER LINES INDEX MAPPING

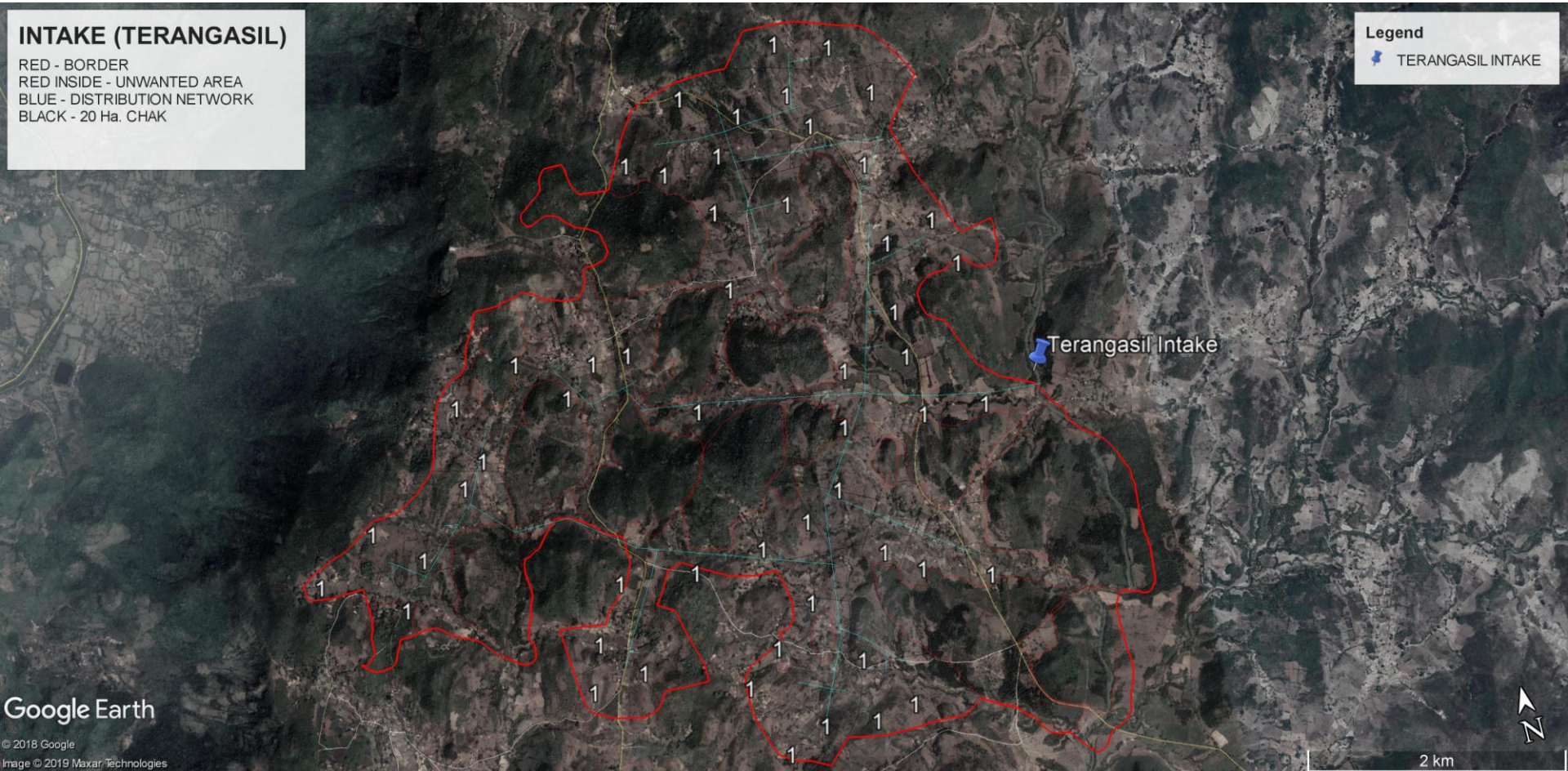
GIS AUTO CAD – 20 Ha. CHAK - GOPINATHPUR



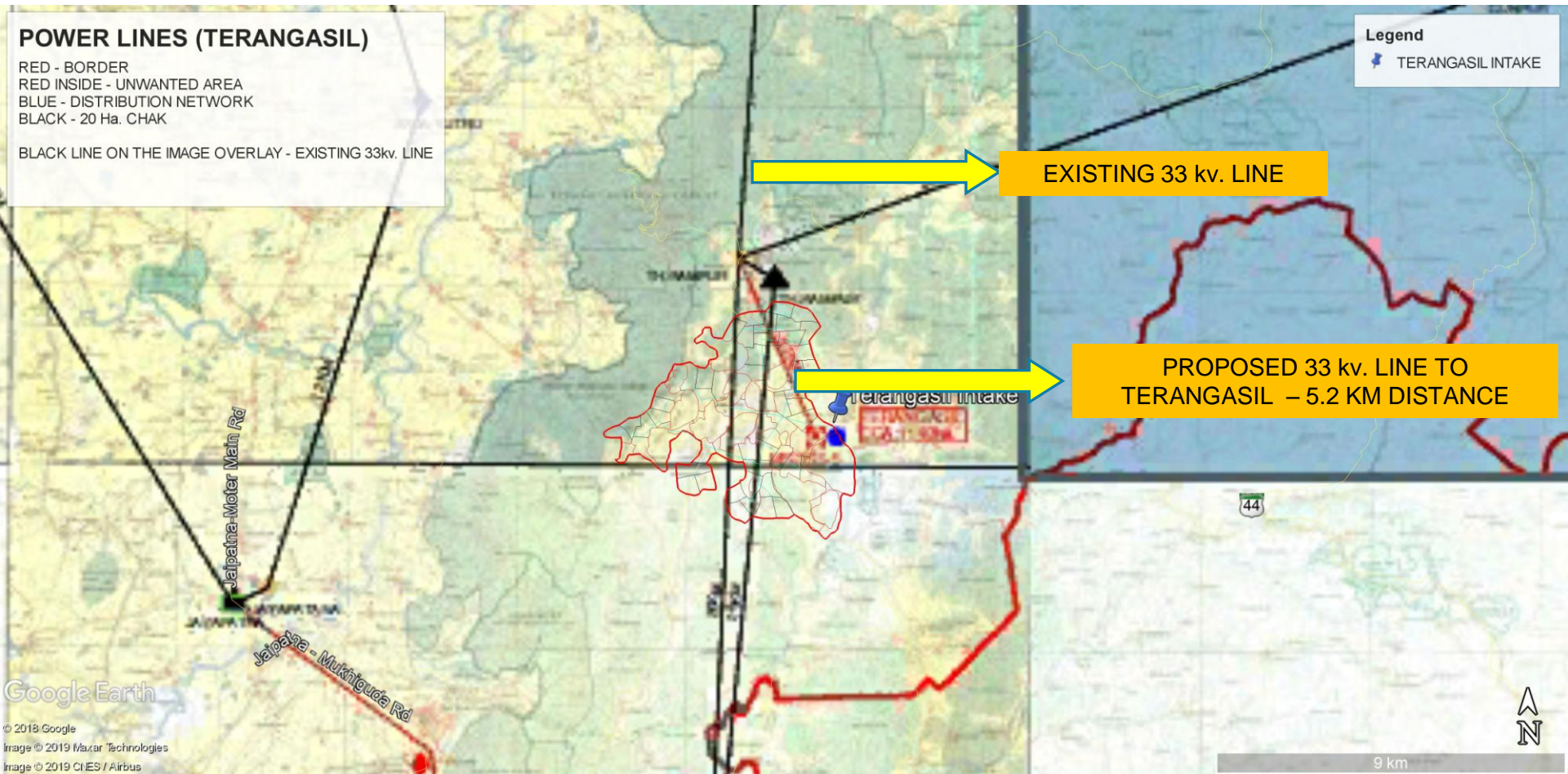
SCHEME 4 -TERANGASIL

10 M INTERVAL CONTOUR SURVEY OF TERANGASIL



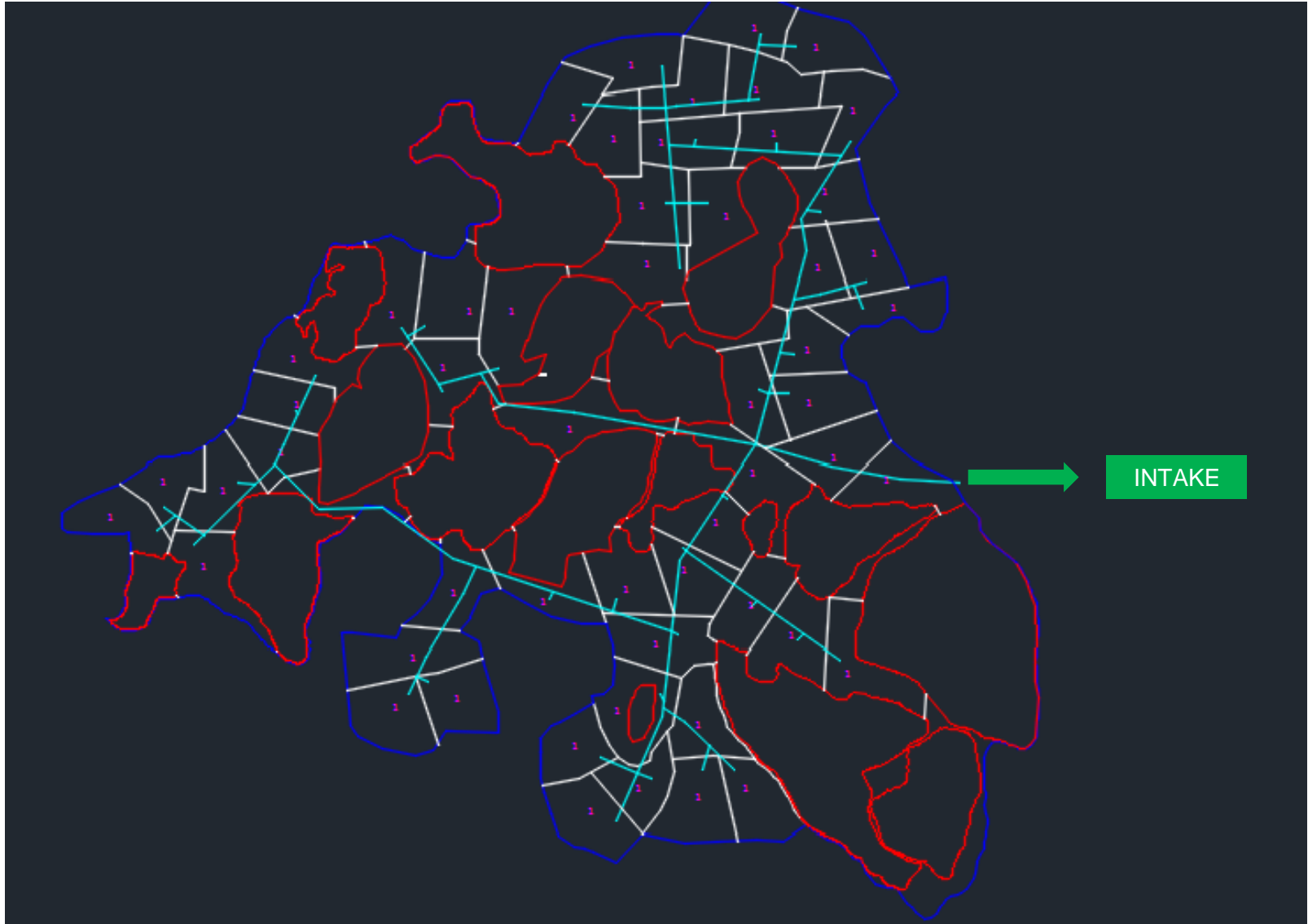


GIS MAPPING INTAKE – DISTRIBUTION NETWORK



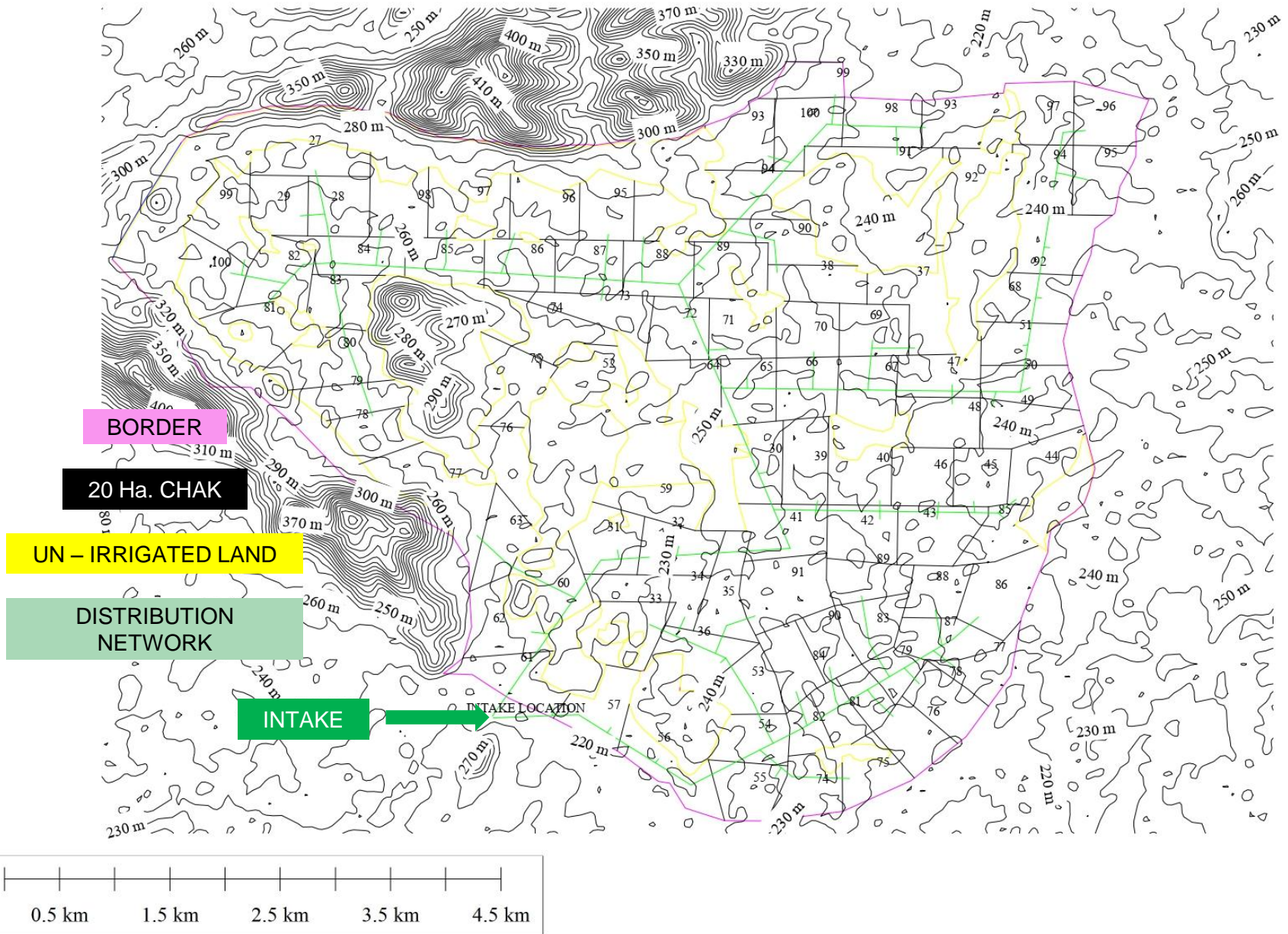
GIS MAPPING OF EXISTING AND PROPOSED POWER LINES INDEX MAP

GIS AUTO CAD – 20 Ha. CHAK - TERANGASIL




SCHEME 5 -LARAMBHA

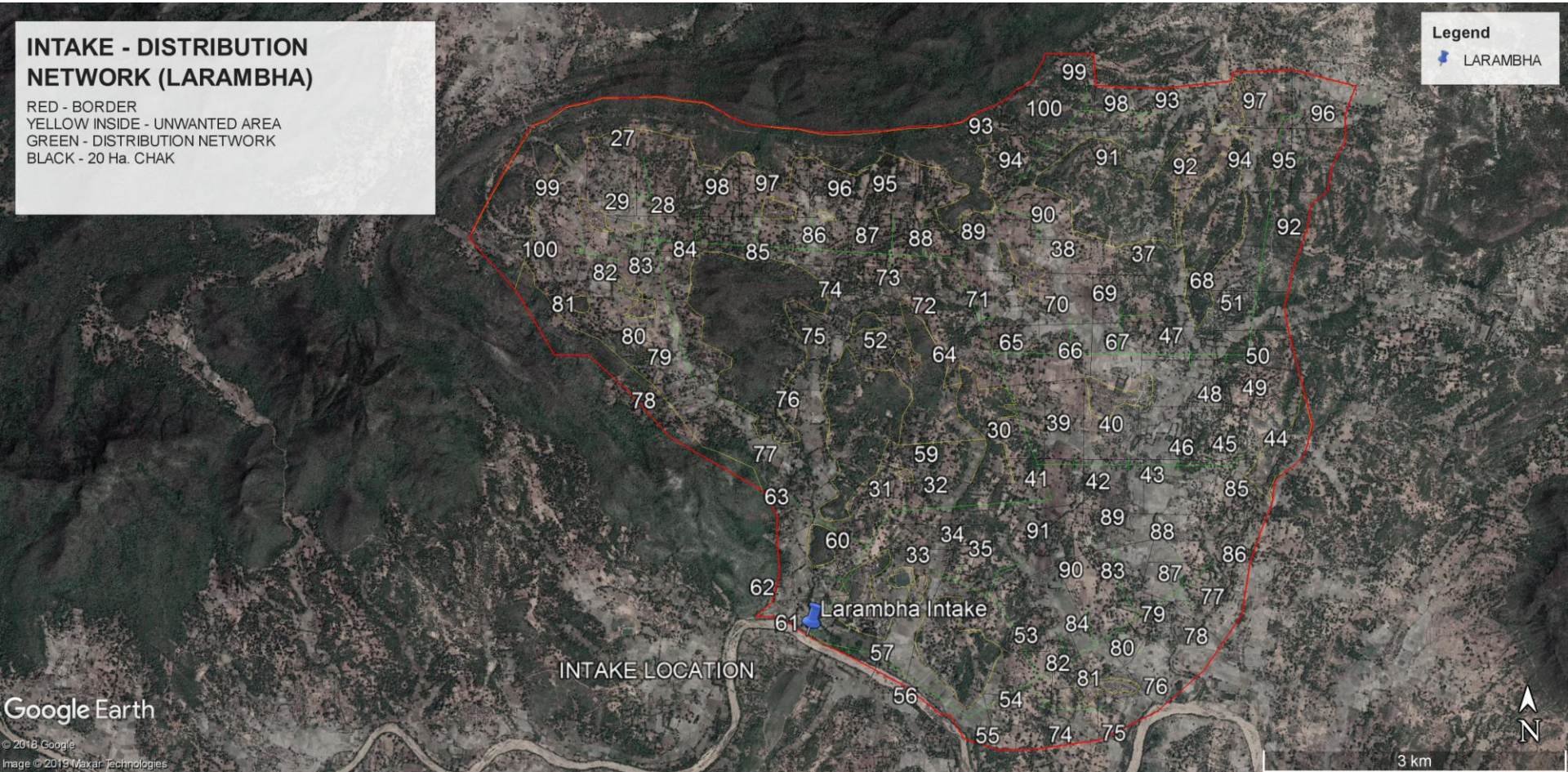
INTERVAL CONTOUR SURVEY OF LARAMBHA



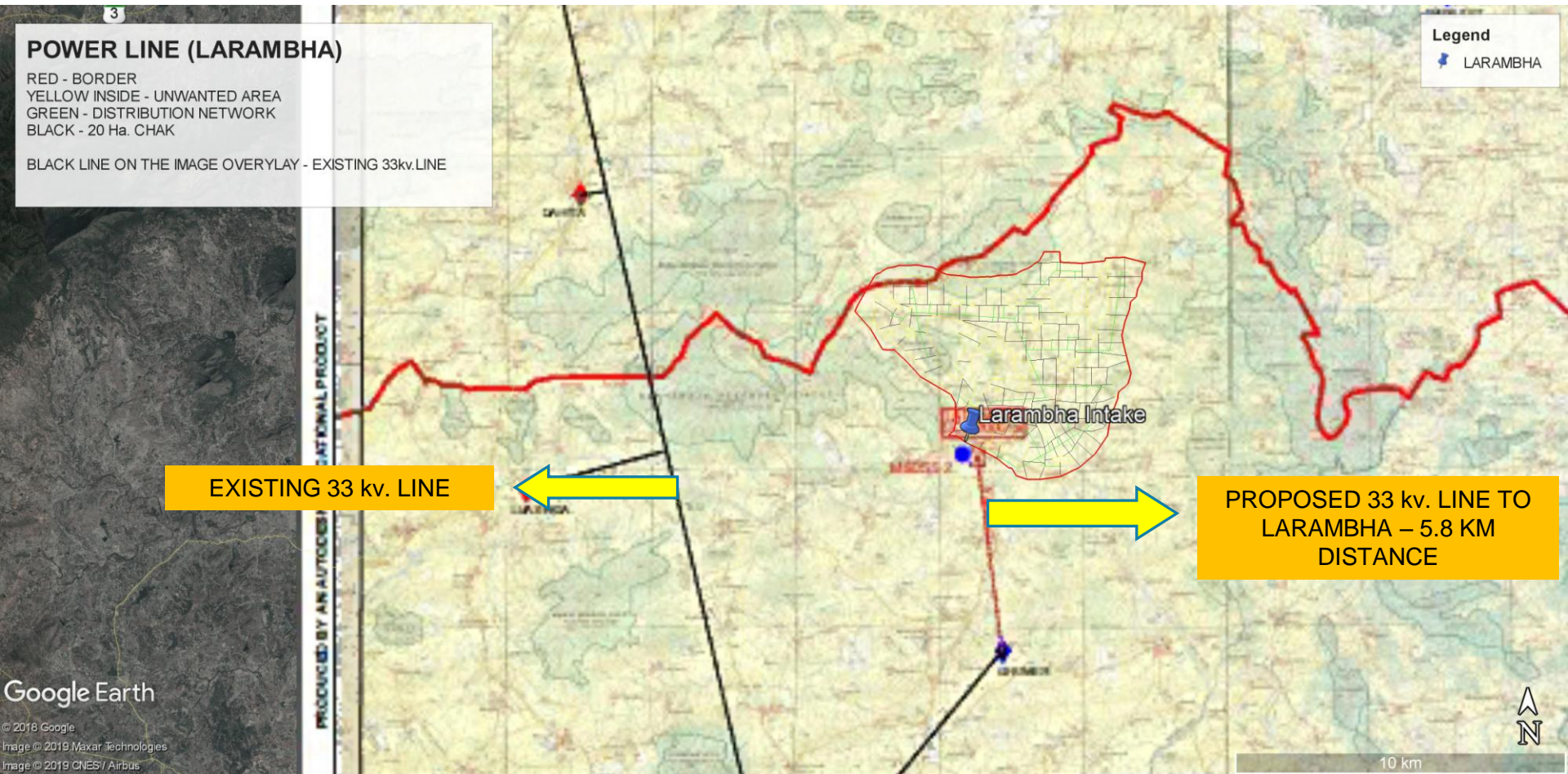
INTAKE - DISTRIBUTION NETWORK (LARAMBHA)

RED - BORDER
 YELLOW INSIDE - UNWANTED AREA
 GREEN - DISTRIBUTION NETWORK
 BLACK - 20 Ha. CHAK

Legend
 LARAMBHA

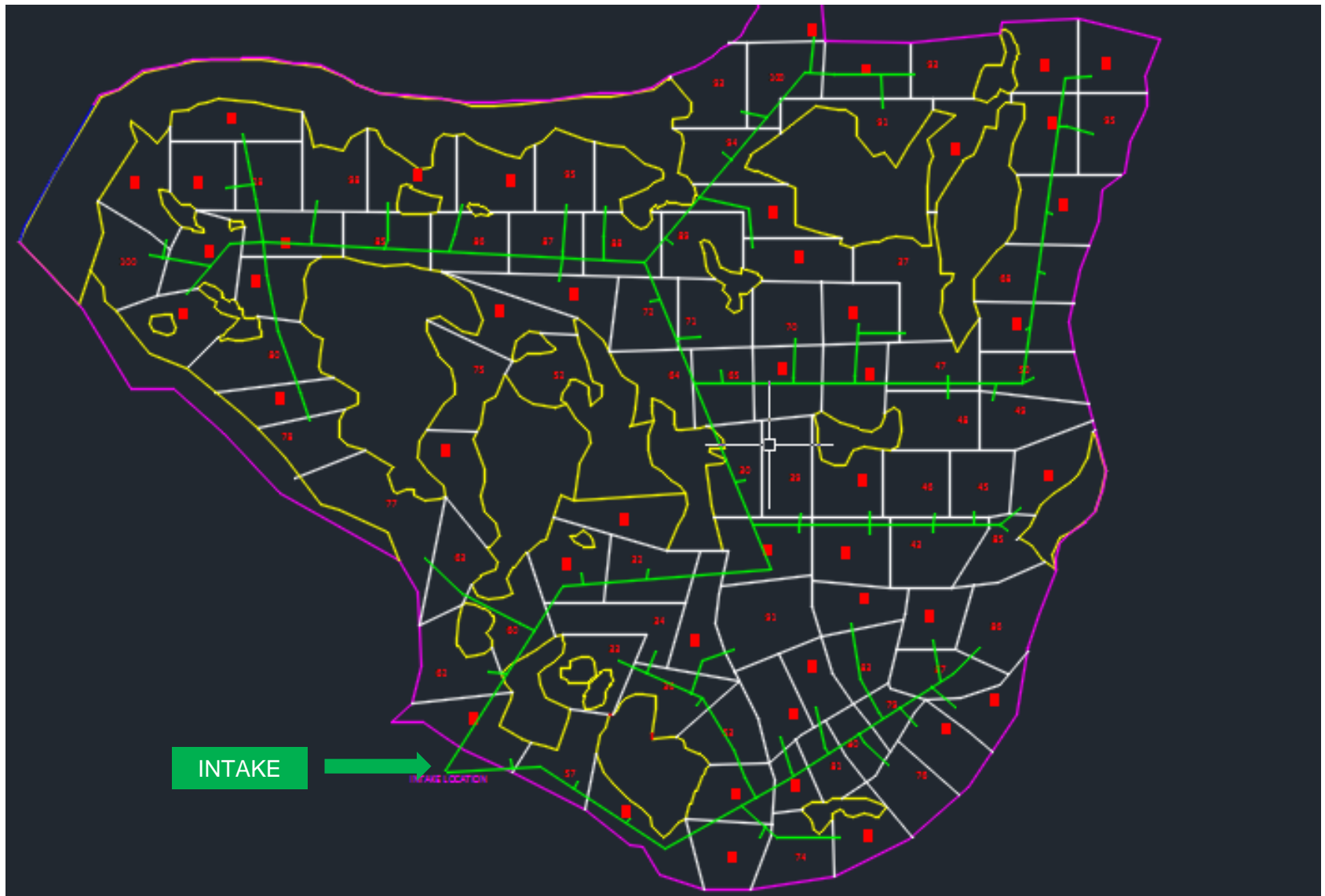


GIS MAPPING COVERING INTAKE – DISTRIBUTION NETWORK



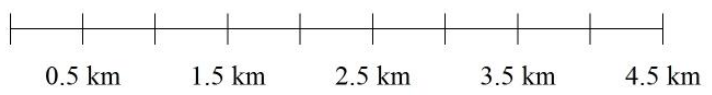
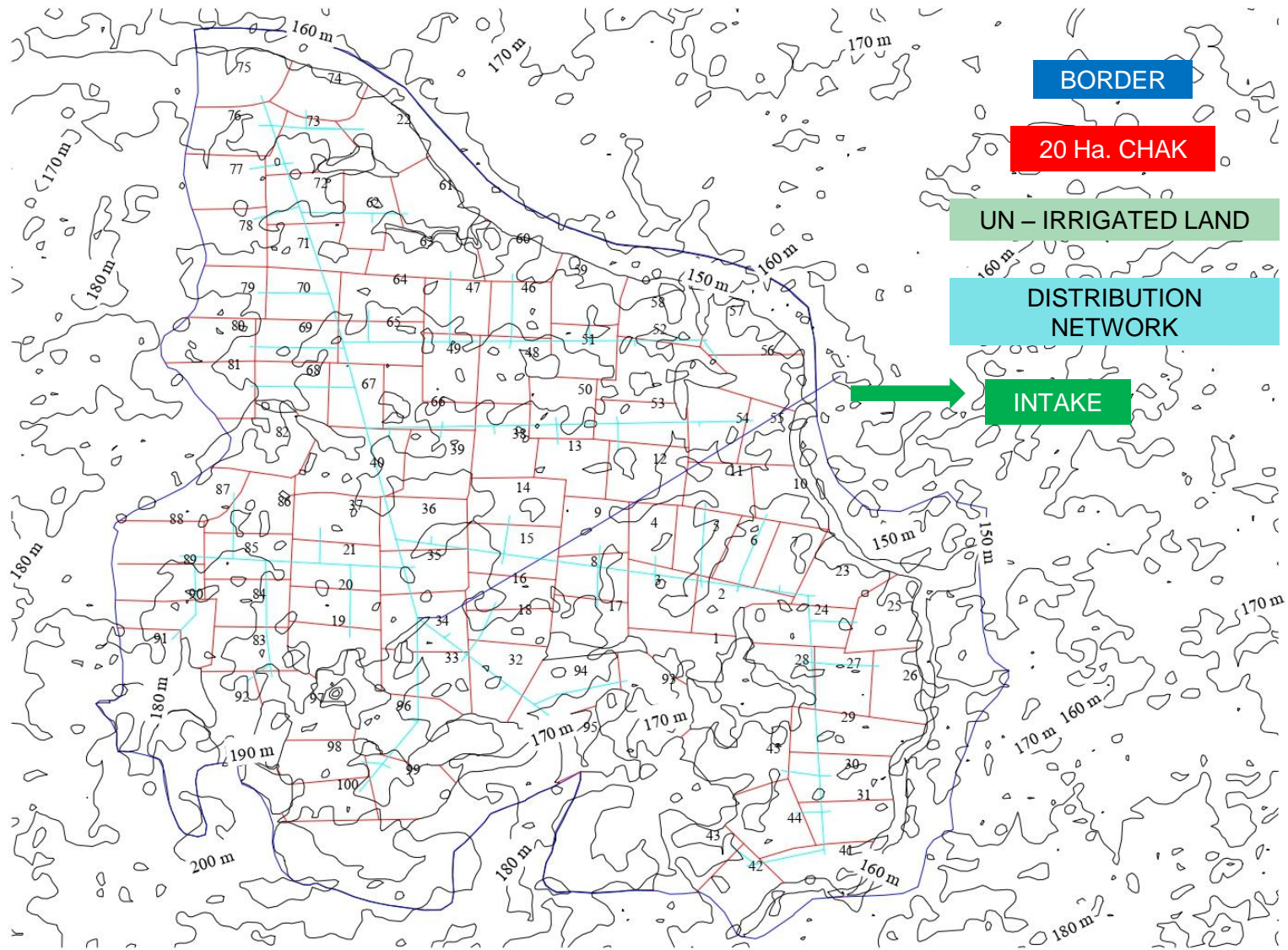
GIS MAPPING OF EXISTING AND PROPOSED POWER LINES INDEX MAP

AUTO CAD – 20 Ha. CHAK - LARAMBHA




SCHEME 6 -BUROMUNDA

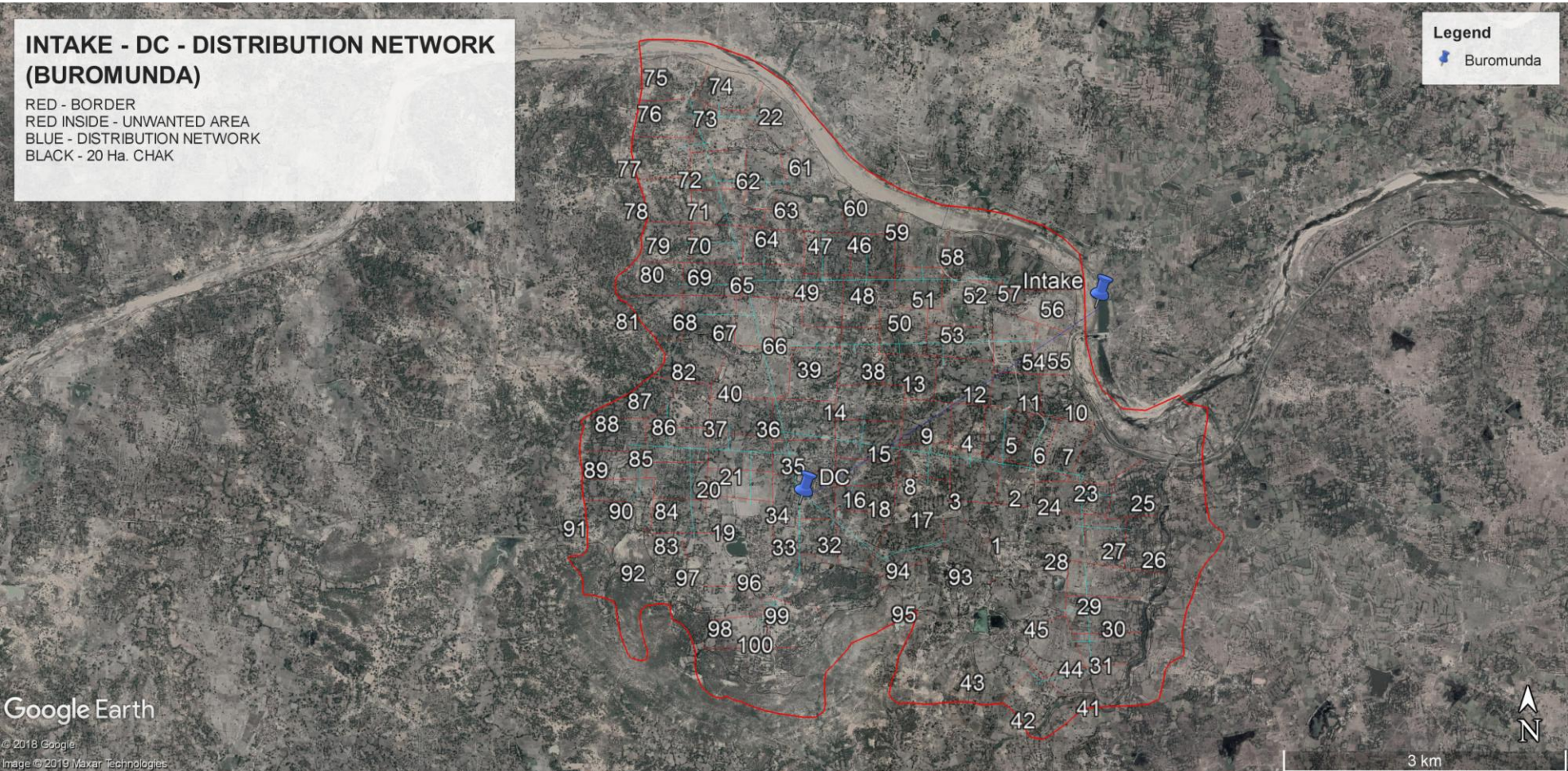
CONTOUR SURVEY CONSULTING OF BUROMUNDA



INTAKE - DC - DISTRIBUTION NETWORK (BUROMUNDA)

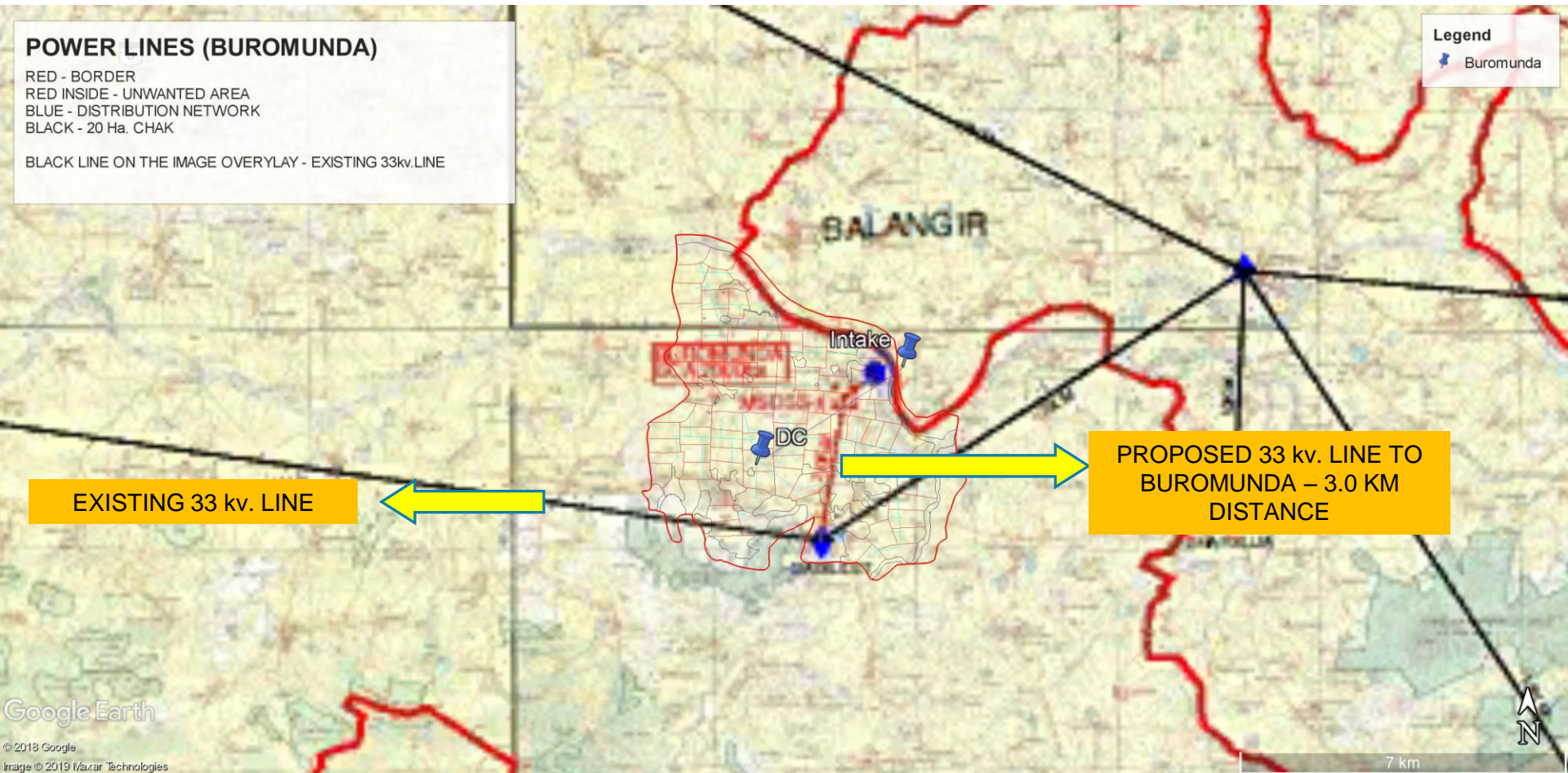
RED - BORDER
 RED INSIDE - UNWANTED AREA
 BLUE - DISTRIBUTION NETWORK
 BLACK - 20 Ha. CHAK

Legend
 Buromunda



Google Earth
 © 2018 Google
 Image © 2019 Maxar Technologies

GIS MAPPING COVERING INTAKE , DC & DISTRIBUTION NETWORK



GIS MAPPING OF EXISTING AND PROPOSED POWER LINES INDEX MAP

AUTO CAD – 20 Ha. CHAK - BUROMUNDA



THE END



THANK YOU!

PHANS4 CONSULTING PVT. LTD.



COMPANY PROFILE - GLOBAL ENGINEERING CONSULTANCY
HYDERABAD - INDIA

COMPANY PROFILE



ABOUT US: -

- ▶ PHANS4 is engaged in global consulting solutions, where we combine classic management consulting with outstanding technological expertise. For more than 10 years, we have been supporting companies around, through various consulting services to improve the sustainability of their competitiveness and performance capabilities along the entire value chain with the aid of innovative technologies.

VISION: -

- ▶ PHANS4 CONSULTING PRIVATE LIMITED is a global diversified company with a network of workforce committed to the growth of your business through innovation which strikes for sustainable development of your business.

CONSULTING SECTORS

- ▶ PHANS4 CONSULTING services are carried out in sectors like : - Water Resource & Irrigation, Roads and Highway, Bridges, Railways, Ports, Oil & Gas, Special Economic Zones, Agriculture etc.



WATER SECTOR

WE DEAL

Rural
Water
Supply and
Sanitation

lift
Irrigation
Schemes

Drip &
Sprinkler
Irrigation

Dam &
Marine
Structures

Treatment
Plants

Storm
Water
Drainage
System

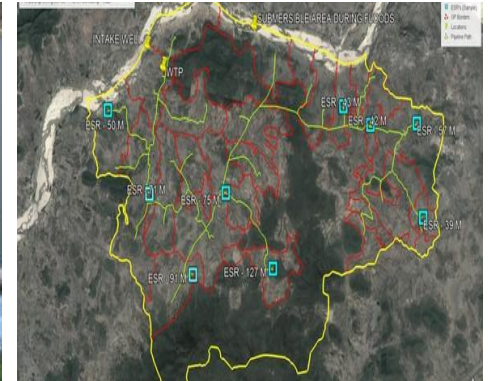
Lake
Development

RURAL WATER SUPPLY SANITATION

- ▶ Population growth in India is putting tremendous pressure on existing water systems to supply water to both urban and rural area in terms of quality and quantity requirement. PHANS4 CONSULTING has designed efficient rural piped water supply consulting solutions to meet the requirements of the country. Our experienced Engineers draws a lot of strategies and best technologies to the projects.

CONSULTING SERVICES

- Pre bid engineering
- Water demand studies
- Site survey and investigations
- Raw water intake pump calculations
- Master balancing reservoir (MBR)
- Water treatment plant design
- Hydraulics Design
- Capacity calculations
- Elevated service reservoirs
- Distribution pipeline networks
- Electrical, Mechanical & Instrumentation (BOQ)
- Power (Substation design, Transmission line etc)
- SCADA, PLC, RTU's - Control Panels
- Operations & Maintenance

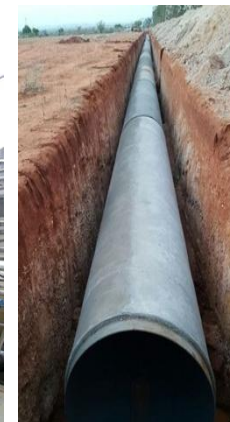
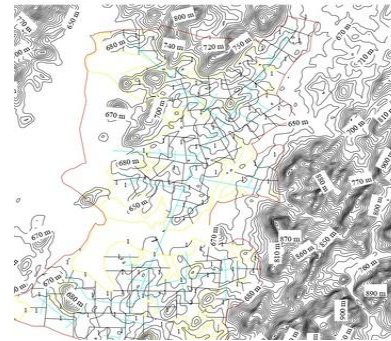


LIFT IRRIGATION

- ▶ Phans4 is engaged in projects involved in water sector such as EPC of lift Irrigation system to supply water through pressurized pipeline system for lift irrigation (Drip/Sprinkler) to deliver at farmers filed at respective chak's, also including survey, investigation, designing, drawing, procurement, construction of pump houses, laying, of rising /gravity mains, main lines, branch lines, distribution network (500/20/2.5 Ha Chak), controlling and regulation system with SCADA and Management operations and maintenance.

CONSULTING SERVICES

- Tender Support (Pre-bid Review, Meetings, Queries, Bid submissions)
- GIS Mapping (Watershed, Contours, Mapping)
- Survey and Investigations Intake systems
- Pump House design and selection
- Rising Mains/Pressure Mains (DI, MS Pipes)
- Gravity mains (DI,MS pipes, HDPE)
- Delivery Chamber/BPT
- Distribution network planning
- Control and Instrumentation design of entire scheme
- Major and Minor outlets with Locations
- BOQ's (Electrical & Mechanical)
- Project management consulting



DRIP/SPRINKLER IRRIGATION

- ▶ Phans4is engaged in projects involved in water sector such as micro-irrigation through **Drip/ Sprinkler** with subsurface and surface sources with components designed for pumps, water filters, backwash, pressure control valves, emitting designs with the principle idea of matching the farm's conditions and designing the most reliable, efficient and cost-effective scale per acre.

CONSULTING SERVICES

- Pre Bid Engineering
- Site Survey & Investigations
- Soil Type and Usage Classification
- Water source and Intake Point
- Crop Pattern & Climate Study
- Water Requirements' as per Crop
- Hydraulics Design (Drip/Sprinkler)
- Pump house & Storage of water
- Selection of Drip Irrigation System (Drip Pipe, Lines, Drippers, Fitters, Valves)
- Selection of Sprinkler Irrigation System (Pipes, Sprays, Foggers, Overhead)

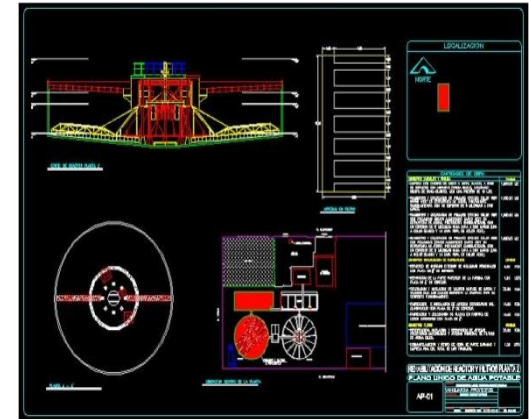


TREATMENT PLANTS

- ▶ Our engineers have proven experience and been independent consultancy on water and wastewater treatment in enhancing the efficiency of the plant while adding extra safety to the environment. PHANS4 has focused on improving operational flexibility and reliability mastered the design and development of efficient systems for industrial water treatment and effluent treatment plants.

CONSULTING SERVICES

- Site Study & Design engineering
- Identification of technologies
- Preparation of feasibility study (WTP, ETP)
- Detailed project reports (WTP, ETP)
- Transaction advisory services (WTP,ETP)
- Source Survey
- Water quality report (pH, TDS, TSS, Hardness, Cl, SO4, Turbidity, COD)
- Design and Supply and Erection and Commissioning of WTP, ETP
- Operations and Maintenance (WTP, ETP)

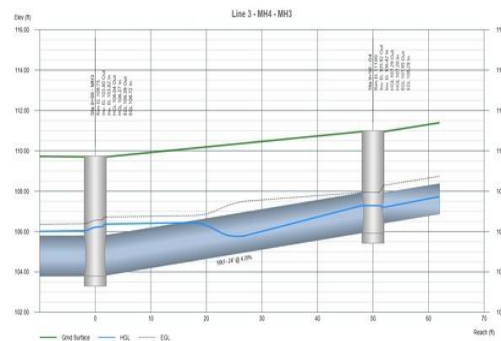


STORM WATER MANAGEMENT

- ▶ Storm water management is the effort to reduce the runoff of rainwater and improvement of water quality. Together we provide a greater understanding of the characteristics of storm water run-off, sediment detention design, water quality impacts and management of non-storm water potential pollutant sources. Over the years PHANS4 CONSULTING has developed design models for efficient storm water drainage systems for various government bodies, SEZ's, Real-estate projects, ports across India.

CONSULTING SERVICES

- Identifying the urban flooded areas using the latest technologies
- Data collections
- Conducting surveys and investigations
- Watershed Management
- Preparation of storm water drainage network
- Hydraulic designs of storm water drainage
- Manholes locations
- Downstream Calculations
- Pumping of storm runoffs
- Outfall structures and natural streams
- Conducting rainfall analysis
- Design of rainwater harvesting systems



LAKE DEVELOPEMENT

- ▶ Phans4 has proven expertise in lake development and consulting right from lake rejuvenation and beautification to revenue making. Our expertise is as follows.

CONSULTING SERVICES

- Detailed project reports
- Water Quality Analysis
- Inflow Channels
- Contours Survey
- Beautification of lakes
- Bund improvements & Pitching work
- Gravity main pipeline network
- Topographical survey maps of the area Village map
- Tank details & Rainfall details
- Reconnaissance survey for tank silt
- Bund details & Waste weir details
- Preparation of preliminary designs
- Drawings & detail estimates
- Improvements of tanks
- Waste weir
- Structures detail design



CONTACT

“

PHANS4 CONSULTING PVT. LTD.

#703, Dega Towers, Rajbhavan Road
Somajiguda, Hyderabad, Telangana 500082.

Website – www.phans4.com

Email - business@phans4.com

Mobile - +91 78 42 43 0123

”

